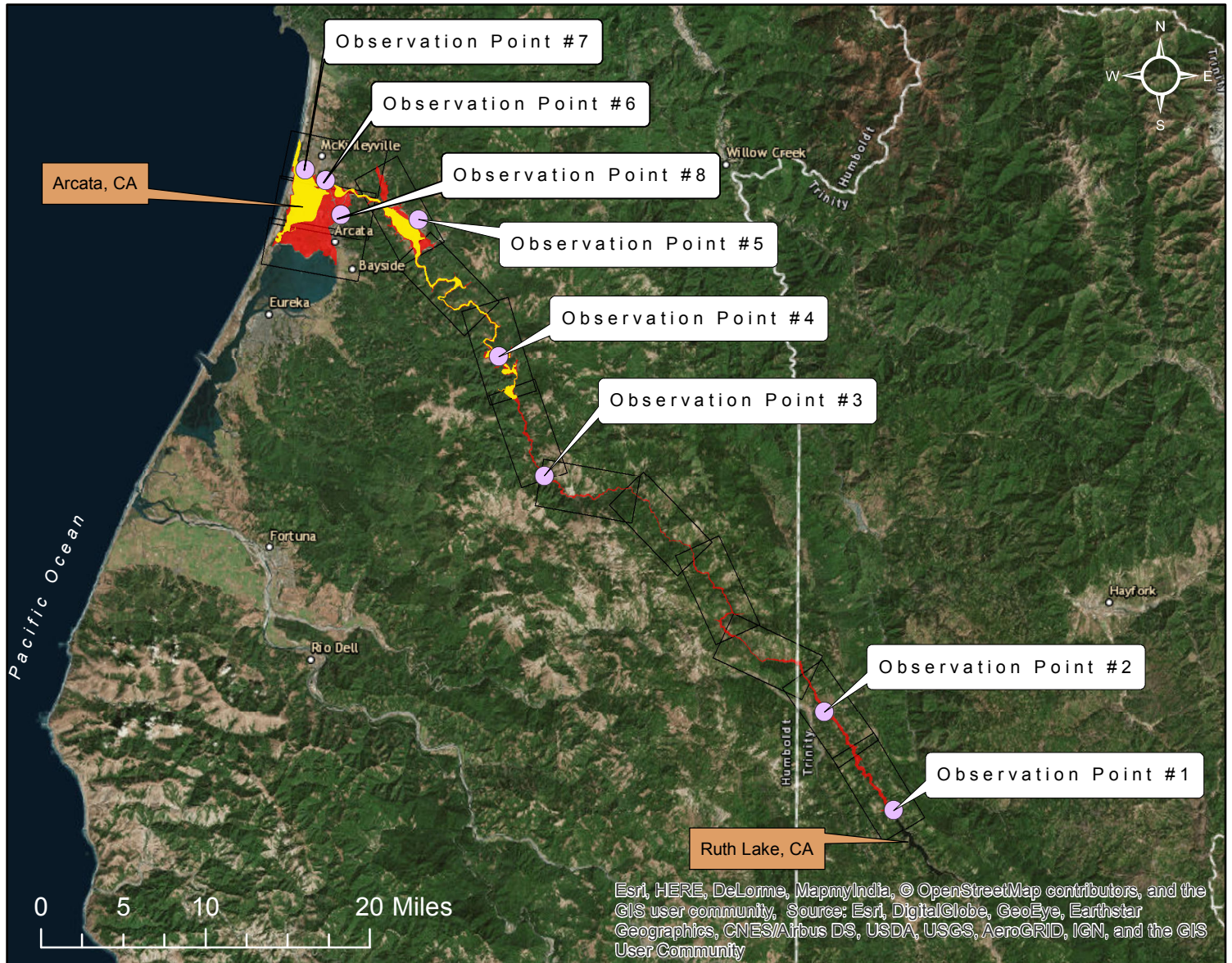


Coordinates for Observation Points

Observation Point	Coordinates
Observation Point #1	40° 22' 9.47" N / 123° 25' 57.22" W
Observation Point #2	40° 27' 18.01" N / 123° 30' 44.24" W
Observation Point #3	40° 39' 45.89" N / 123° 50' 18.81" W
Observation Point #4	40° 45' 57.12" N / 123° 53' 25.16" W
Observation Point #5	40° 53' 13.48" N / 123° 59' 27.98" W
Observation Point #6	40° 55' 16.01" N / 124° 5' 46.16" W
Observation Point #7	40° 55' 46.48" N / 124° 7' 12.84" W
Observation Point #8	40° 53' 23.37" N / 124° 4' 42.94" W



Esri, HERE, DeLorme, MapmyIndia, © OpenStreetMap contributors, and the GIS user community, Source: Esri, DigitalGlobe, GeoEye, Earthstar Geographics, CNES/Airbus DS, USDA, USGS, AeroGRID, IGN, and the GIS User Community

Legend

- Observation Points
- Inundation Model for Sunny Day & Critical Apurtenant Structure (CAS) Failure Scenarios
- Inundation Model for Record Flood Scenario
- Map Book Coverage

The inundation area shown on this map reflects extremely rare events. Publication of this map is not intended to reflect in any way upon the integrity of Matthews Dam. All values in the table and inundation areas shown on the map are approximate



**R. W. Matthews Dam
Ruth Lake, CA**

**EAP
Update 2019**

Observation Point #1

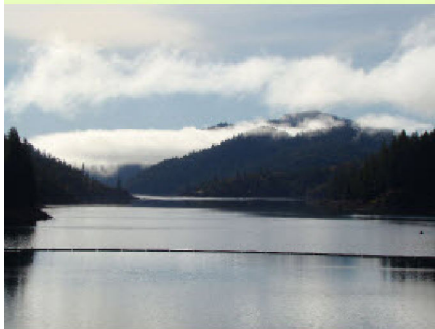
40° 22' 9.47" N / 123° 25' 57.22" W



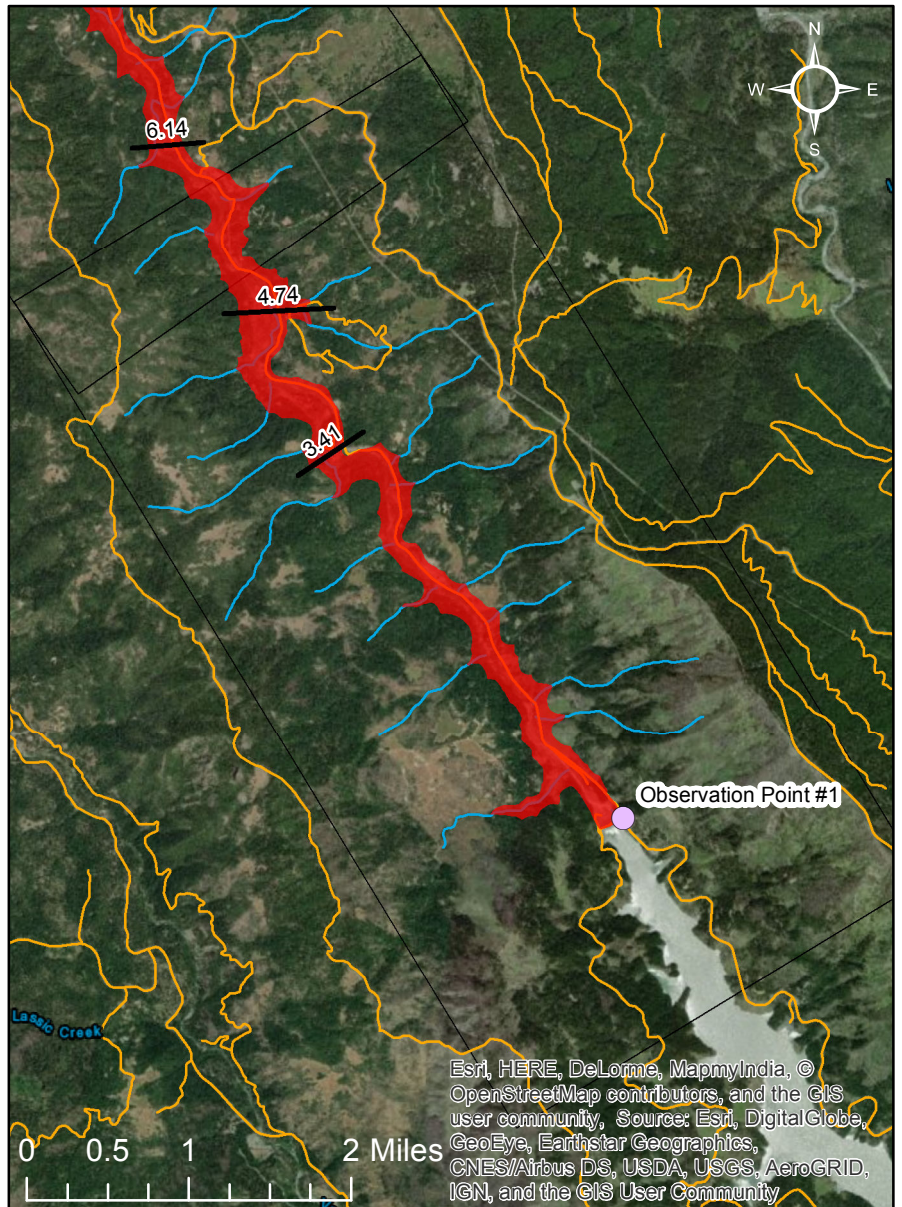
Ruth Hydro Plant View from Lower West Side Rd.



Ruth Lake top of dam above Hydro Plant



View of Ruth Lake from dam



Esri, HERE, DeLorme, MapmyIndia, © OpenStreetMap contributors, and the GIS user community, Source: Esri, DigitalGlobe, GeoEye, Earthstar Geographics, CNES/Airbus DS, USDA, USGS, AeroGRID, IGN, and the GIS User Community

Directions from Hwy 101	
Turn onto CA-36E from Hwy 101	Go 46.2 mi
Continue for 59 minutes	(total 46.2 mi)
Turn right onto Co Rd 511/Van Duzen Rd	Go 14.8 mi
Continue to follow Van Duzen Rd	(total 61.0 mi)
Continue for 27 minutes	
Turn left onto Ruth Zenia Rd	Go 12.0 mi
Continue for 30 minutes	(total 73.0 mi)
Slight left onto Co Rte 504/Lower Mad River Rd	Go 3.5 mi
Continue to follow Co Rte 504	(total 76.5 mi)
Continue for 9 minutes	
Continue onto Lower Mad River Rd	Go 10.9 mi
To Observation Point #1 at R.W. Matthews Dam	(total 87.4 mi)

- Observation Points
- Inundation Model for Sunny Day & Critical Apurtenant Structure (CAS) Failure Scenarios
- Inundation Model for Record Flood Scenario
- Map Book Coverage
- Roads
- Streams
- Mile Marker (from Dam)

The inundation area shown on this map reflects extremely rare events. Publication of this map is not intended to reflect in any way upon the integrity of R. W. Matthews Dam. All values in the table and inundation areas shown on the map are approximate



R. W. Matthews Dam
Ruth Lake, CA

EAP
Update 2019

Observation Point #2

40° 27' 18.01" N / 123° 30' 44.24" W



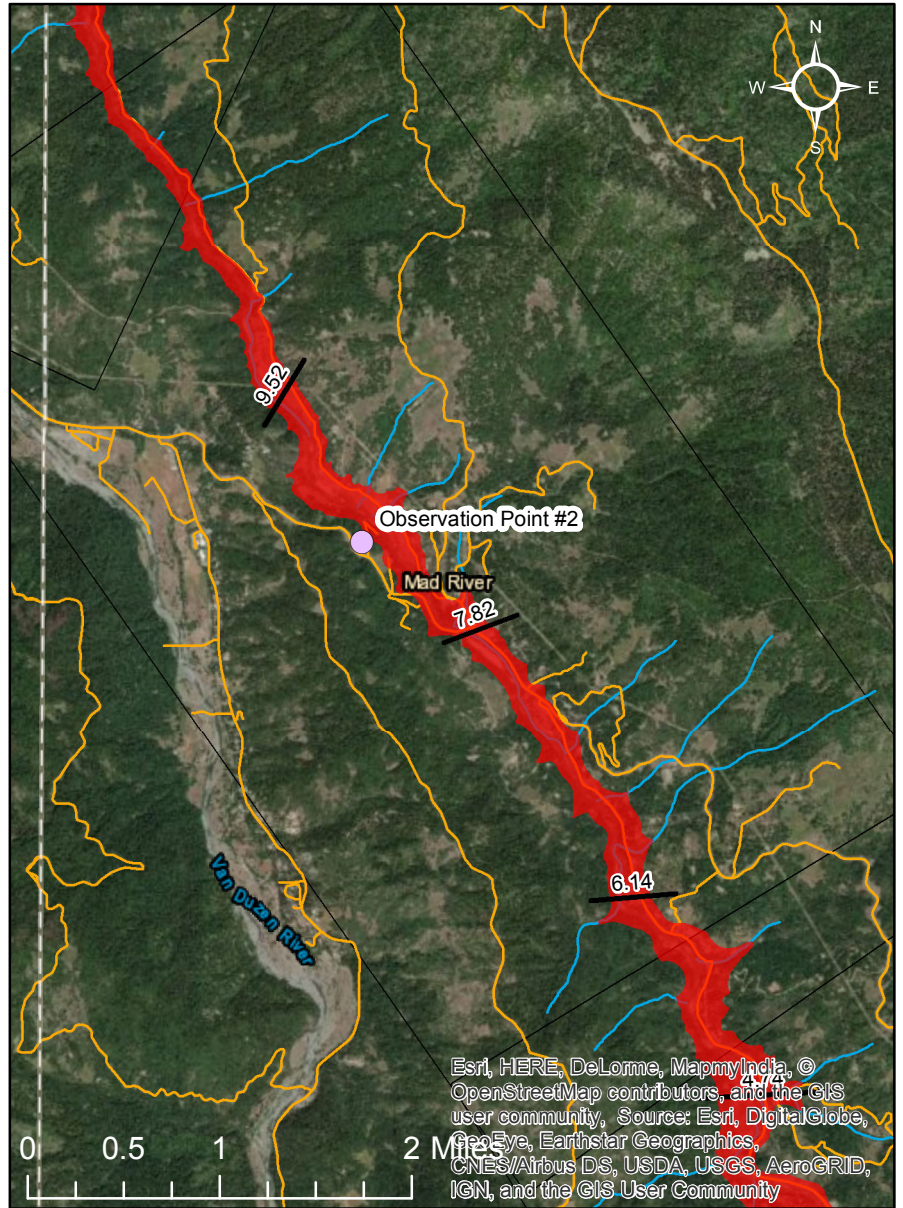
Bolton Rd.
off Hwy 36



Private Gate On Bolton Rd.
Owner: Jim Ledbetter 707-574-6492



View of Mad River from
Observation Point #2



Directions from Hwy 101	
Turn onto CA-36E from Hwy 101	Go 47.6 mi
Continue for 1 hour 1 minute	(total 47.6 mi)
Turn left onto Bolton Rd	Go 0.2 mi
Continue for 1 minute	(total 47.8 mi)

- Observation Points
- Inundation Model for Sunny Day & Critical Apurtenant Structure (CAS) Failure Scenarios
- Inundation Model for Record Flood Scenario
- Map Book Coverage
- Roads
- Streams
- Mile Marker (from Dam)

The inundation area shown on this map reflects extremely rare events. Publication of this map is not intended to reflect in any way upon the integrity of R. W. Matthews Dam. All values in the table and inundation areas shown on the map are approximate



R. W. Matthews Dam
Ruth Lake, CA

EAP
Update 2019

Observation Point #3

40° 39' 45.89" N / 123° 50' 18.81" W



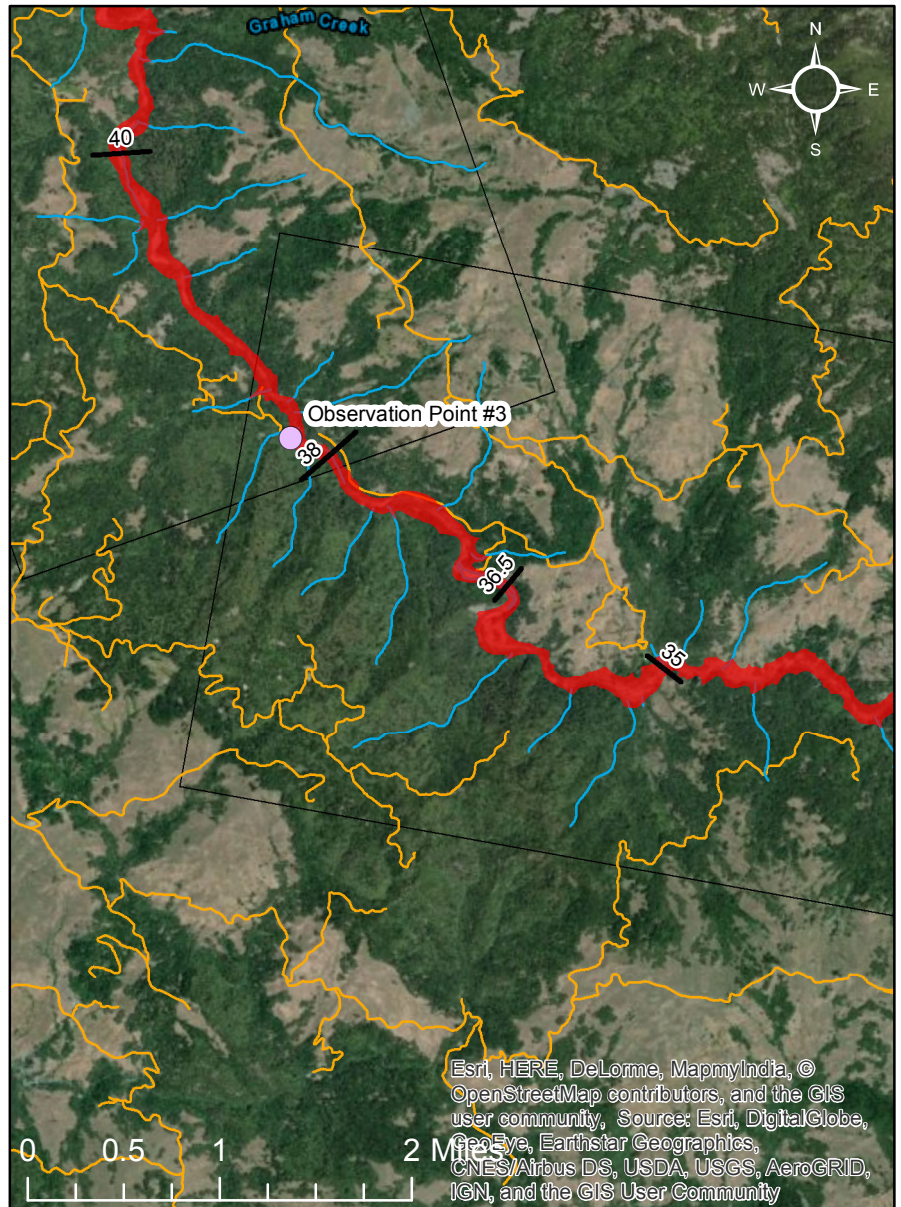
Mountain View Rd. and Jack Shaw Rd. turnoff










Observation Point #3 at the end of Jack Shaw Rd.



View of Mad River from Observation Point #3



Directions from Hwy 101	
Take Indianola Cutoff from Hwy 101	Go 0.8 mi
Continue for 2 minutes	(total 0.8 mi)
At the traffic circle, take the 1st exit onto Myrtle Avenue	Go 1.8 mi
Continue for 3 minutes	(total 2.6 mi)
Turn left onto Freshwater Rd	Go 3.1 mi
Continue for 6 minutes	(total 5.7 mi)
Turn left onto Freshwater Rd/Kneeland Rd	Go 9.2 mi
Continue to follow Kneeland Rd	(total 14.9 mi)
Continue for 23 minutes	
Slight left onto Montain View Rd	Go 8.1 mi
Continue for 31 minutes	(total 23.0 mi)
Slight left onto Jack Shaw Rd	Go 1.8 mi
Continue for 3 minutes	(total 24.8 mi)

-  Observation Points
-  Inundation Model for Sunny Day & Critical Apurtenant Structure (CAS) Failure Scenarios
-  Inundation Model for Record Flood Scenario
-  Map Book Coverage
-  Roads
-  Streams
-  Mile Marker (from Dam)

The inundation area shown on this map reflects extremely rare events. Publication of this map is not intended to reflect in any way upon the integrity of R. W. Matthews Dam. All values in the table and inundation areas shown on the map are approximate



R. W. Matthews Dam
Ruth Lake, CA

EAP
Update 2019

Observation Point #4

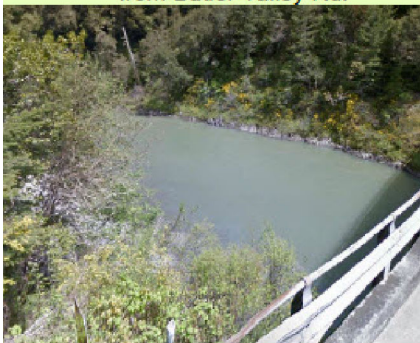
40° 45' 57.12" N / 123° 53' 25.16" W



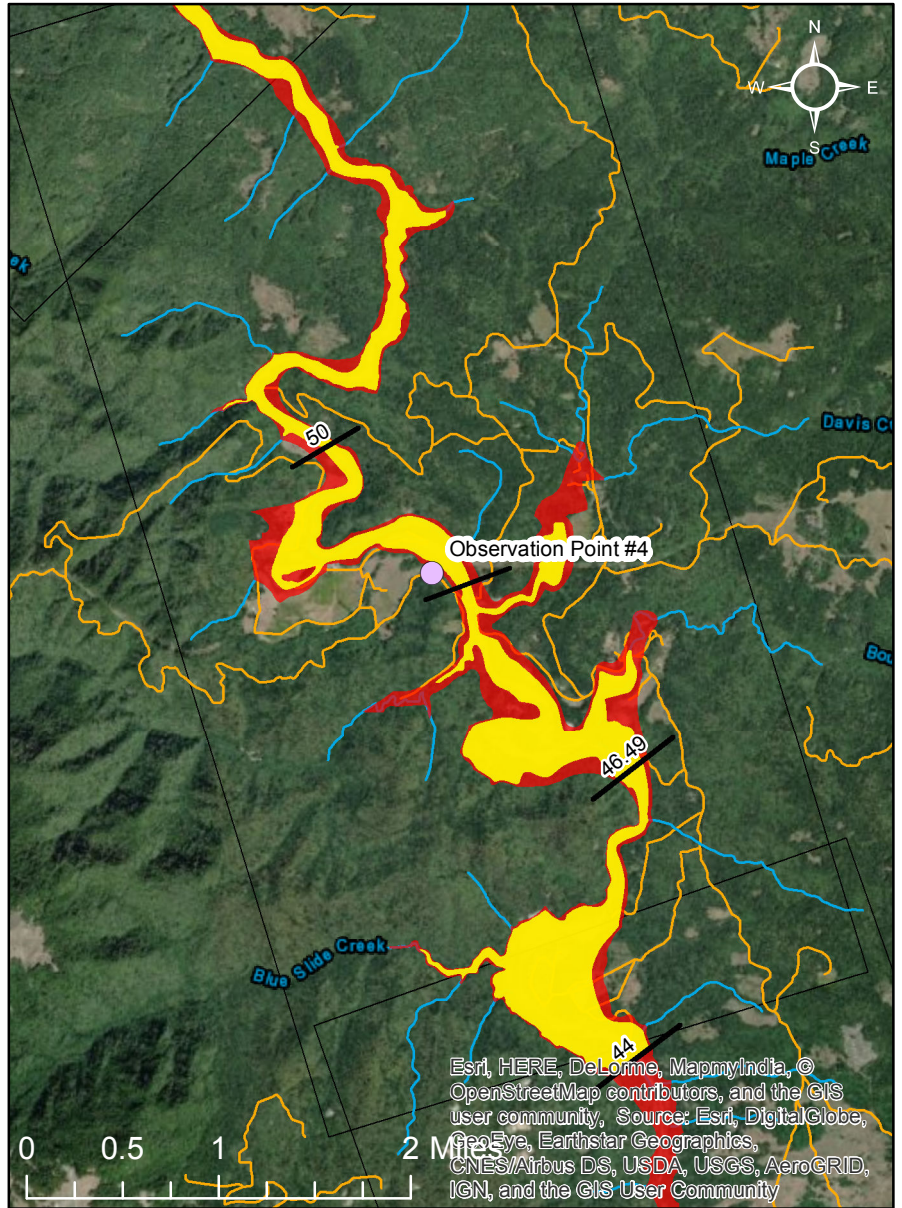
Parking Spot for Observation Point #4



Approach to River from Butler Valley Rd.



View of Mad River from Butler Valley Rd.



Directions from Hwy 101	
Take Indianola Cutoff from Hwy 101	Go 0.8 mi
Continue for 2 minutes	(total 0.8 mi)
At the traffic circle, take the 1st exit onto Myrtle Avenue	Go 1.8 mi
Continue for 3 minutes	(total 2.6 mi)
Turn left onto Freshwater Rd	Go 3.1 mi
Continue for 6 minutes	total (5.7 mi)
Turn left onto Freshwater Rd/Kneeland Rd	Go 6.2 mi
Continue to follow Kneeland Rd	(total 11.9 mi)
Continue for 16 minutes	
Turn left onto Butler Valley Rd	Go 1.8 mi
Continue for 5 minutes	(total 13.7)
Slight right to stay on Butler Valley Rd	Go 5.6 mi
Continue 14 minutes	(total 19.3 mi)

- Observation Points
- Inundation Model for Sunny Day & Critical Apurtenant Structure (CAS) Failure Scenarios
- Inundation Model for Record Flood Scenario
- Map Book Coverage
- Roads
- Streams
- Mile Marker (from Dam)

The inundation area shown on this map reflects extremely rare events. Publication of this map is not intended to reflect in any way upon the integrity of R. W. Matthews Dam. All values in the table and inundation areas shown on the map are approximate



R. W. Matthews Dam
Ruth Lake, CA

EAP
Update 2019

Observation Point #5

40° 53' 13.48" N / 123° 59' 27.98" W



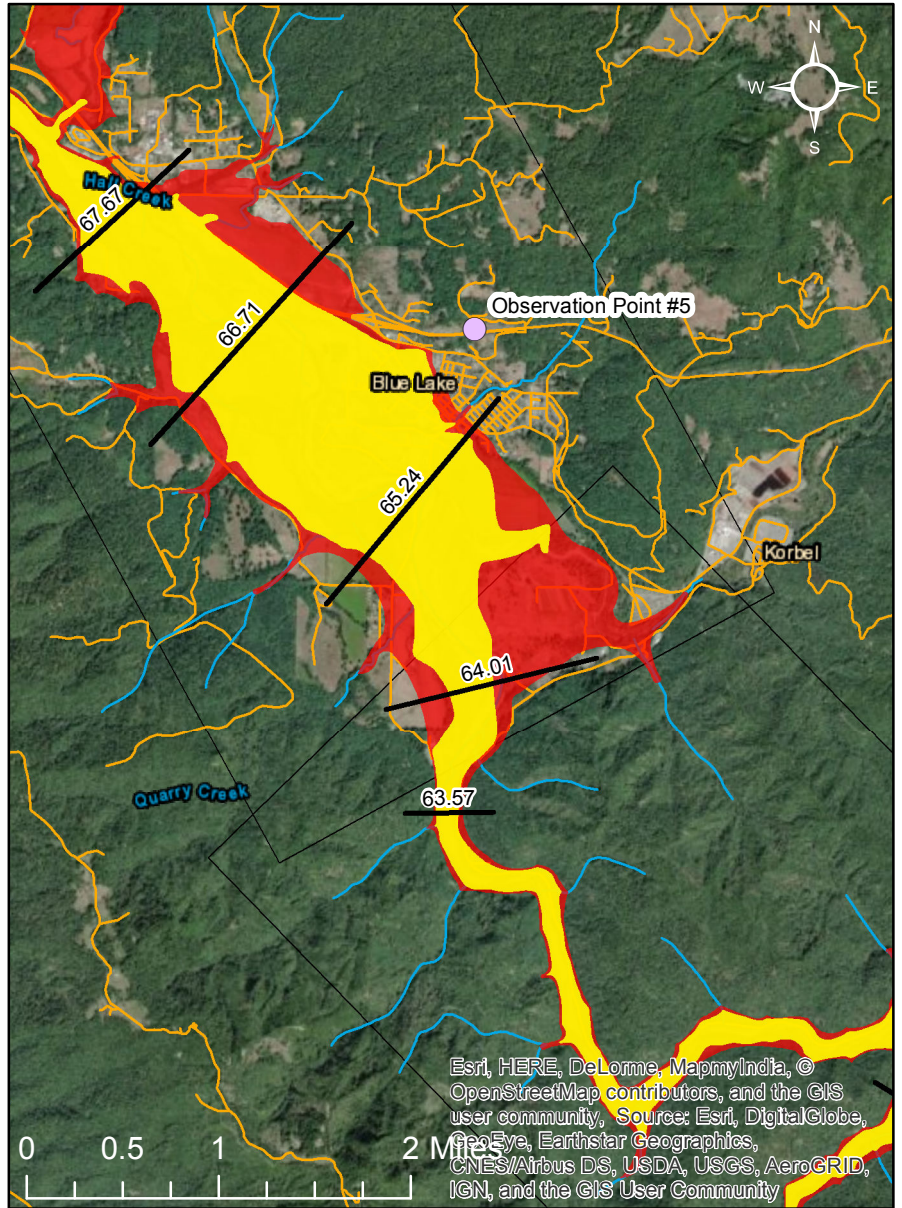
Parking Spot for Observation Point #5



View from Hwy 299 Observation Point #5



View of Mad River Across the road from Observation Point #5



Directions from Hwy 101	
Take CA-299E toward Weaverville/Redding from Hwy 101	Go 7.6 mi (total 7.6 mi)
Continue for 8 minutes	
Continue past Blue Lake exit/Exit 5 and pull to side of Hwy	Go 0.8 mi (total 8.4 mi)

- Observation Points
- Inundation Model for Sunny Day & Critical Apurtenant Structure (CAS) Failure Scenarios
- Inundation Model for Record Flood Scenario
- Map Book Coverage
- Roads
- Streams
- Mile Marker (from Dam)

The inundation area shown on this map reflects extremely rare events. Publication of this map is not intended to reflect in any way upon the integrity of R. W. Matthews Dam. All values in the table and inundation areas shown on the map are approximate



R. W. Matthews Dam
Ruth Lake, CA

EAP
Update 2019

Observation Point #6

40° 55' 16.01" N / 124° 5' 46.16" W



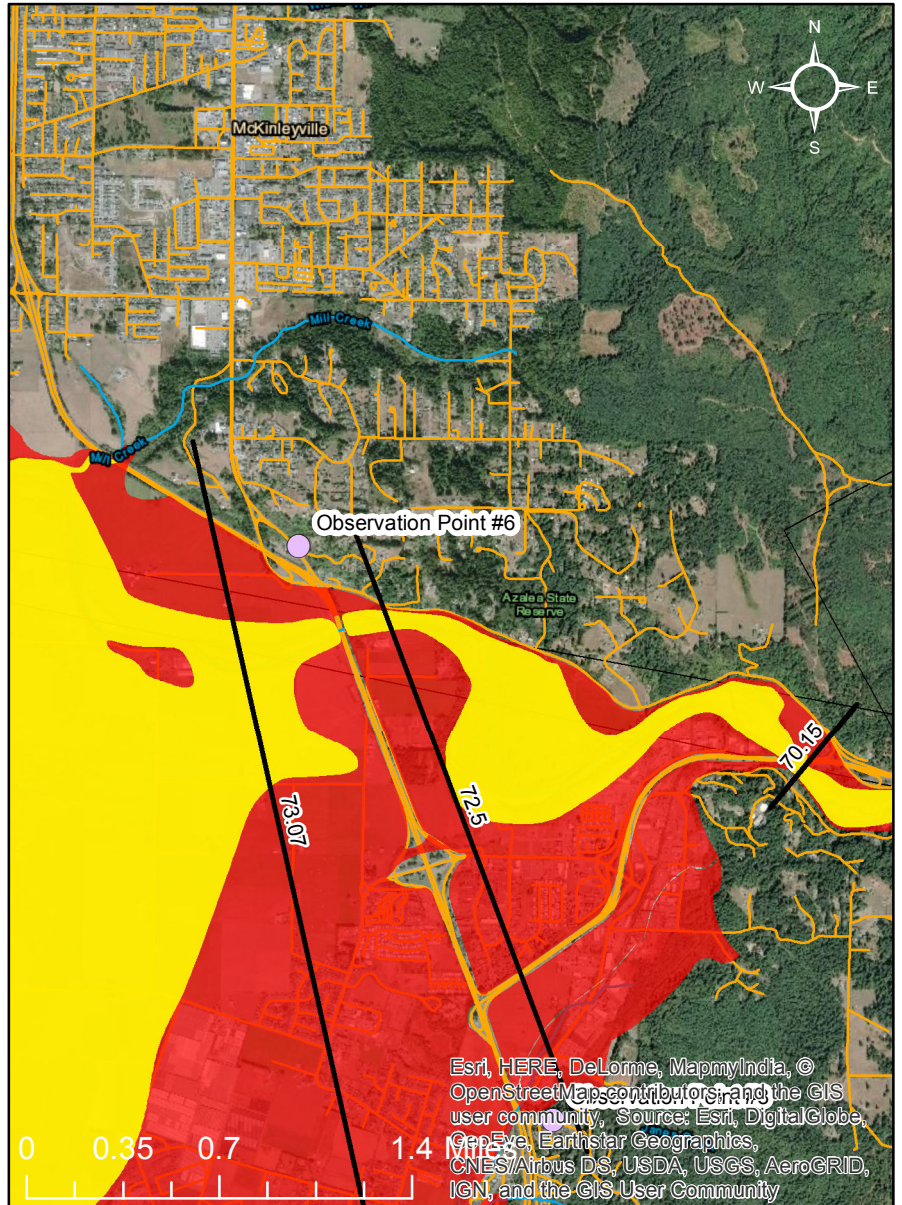
Turn Off Hwy 101 onto Central Ave.



View from Central Ave. at Observation Point #6



View from Observation Point #6



Directions from Hwy 101N	
Take Central Ave exit/Exit 718 toward McKinleyville from Hwy 101N	Go 0.2 mi (total 0.7 mi)
Keep left at the fork, follow signs for US-101 and merge onto Central Avenue	Go 0.2 mi (total 0.8 mi)
Pull to side at corner of Central Ave and St Maru Ln	Go 0.1 mi (total 0.9 mi)

Directions from Hwy 101S	
Take Central Ave exit/Exit 718 toward N Bank Rd from Hwy 101S	Go 0.1 mi (total 0.1 mi)
Sharp right onto Central Ave, follow signs for N Bank Rd	Go 0.3 mi (total 0.4 mi)
Sharp right to stay on Central Ave	Go 0.2 mi (0.6 mi)
Pull to side at corner of Central Ave and St Maru Ln	Go 0.1 mi (total 0.7 mi)

- Observation Points
- Inundation Model for Sunny Day & Critical Apurtenant Structure (CAS) Failure Scenarios
- Inundation Model for Record Flood Scenario
- Map Book Coverage
- Roads
- Streams
- Mile Marker (from Dam)

The inundation area shown on this map reflects extremely rare events. Publication of this map is not intended to reflect in any way upon the integrity of R. W. Matthews Dam. All values in the table and inundation areas shown on the map are approximate



R. W. Matthews Dam
Ruth Lake, CA

EAP
Update 2019

Observation Point #7

40° 55' 46.48" N / 124° 7' 12.84" W



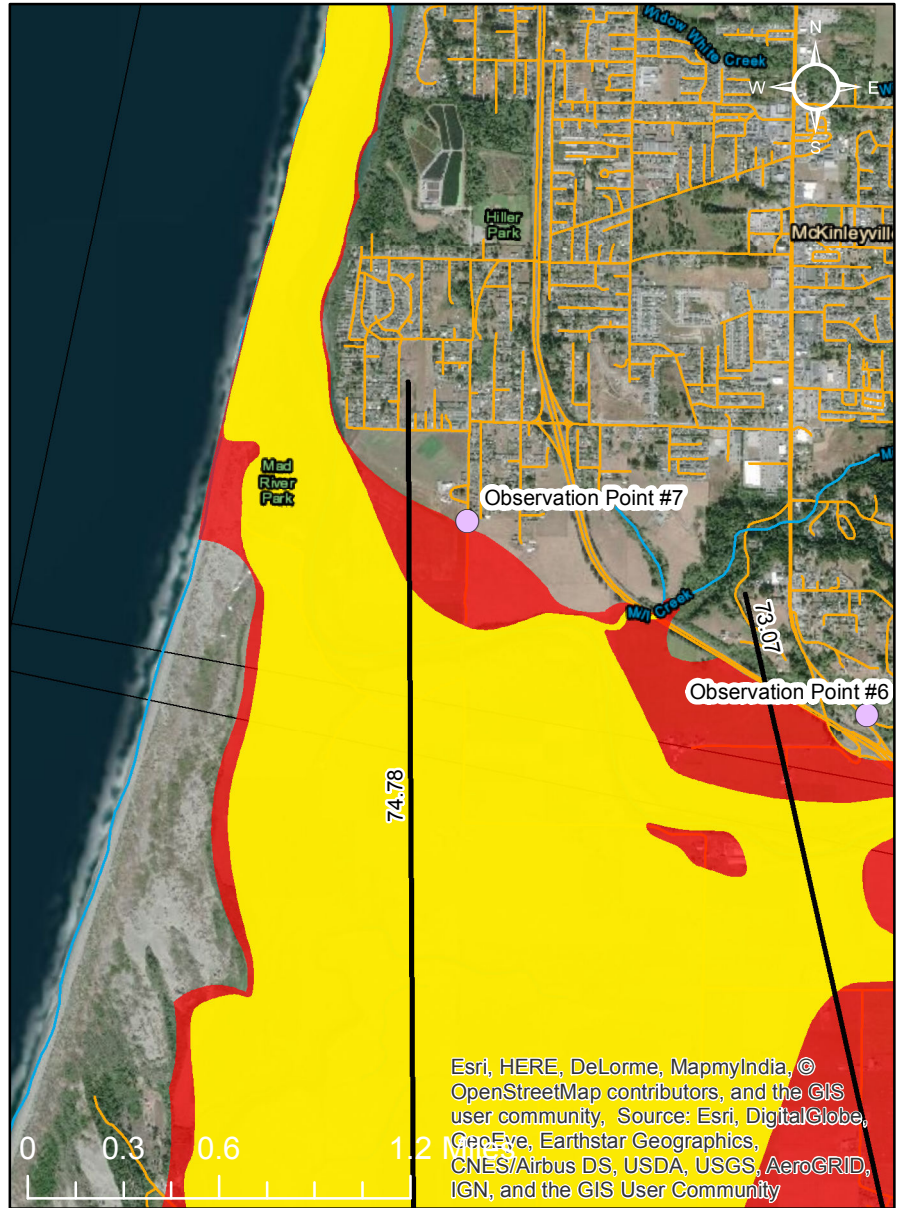
Corner of School Rd.
and Fischer



View of Fischer Rd.



View of Mad River from
Observation Point #7



Esri, HERE, DeLorme, MapmyIndia, © OpenStreetMap contributors, and the GIS user community. Source: Esri, DigitalGlobe, GeoEye, Earthstar Geographics, CNES/Airbus DS, USDA, USGS, AeroGRID, IGN, and the GIS User Community

Directions from Hwy 101	
Take School Road exit/exit 719 from Hwy 101	Go 0.1 mi (total 0.1 mi)
Turn East on School Road, follow signs for Hammond Coastal Trail	Go 0.3 mi (total 0.4 mi)
Turn left onto Fischer Rd	Go 0.2 mi (total 0.6 mi)

- Observation Points
- Inundation Model for Sunny Day & Critical Apurtenant Structure (CAS) Failure Scenarios
- Inundation Model for Record Flood Scenario
- Map Book Coverage
- Roads
- Streams
- Mile Marker (from Dam)

The inundation area shown on this map reflects extremely rare events. Publication of this map is not intended to reflect in any way upon the integrity of R. W. Matthews Dam. All values in the table and inundation areas shown on the map are approximate



R. W. Matthews Dam
Ruth Lake, CA

EAP
Update 2019

Observation Point #8

40° 53' 23.37" N / 124° 4' 42.94" W



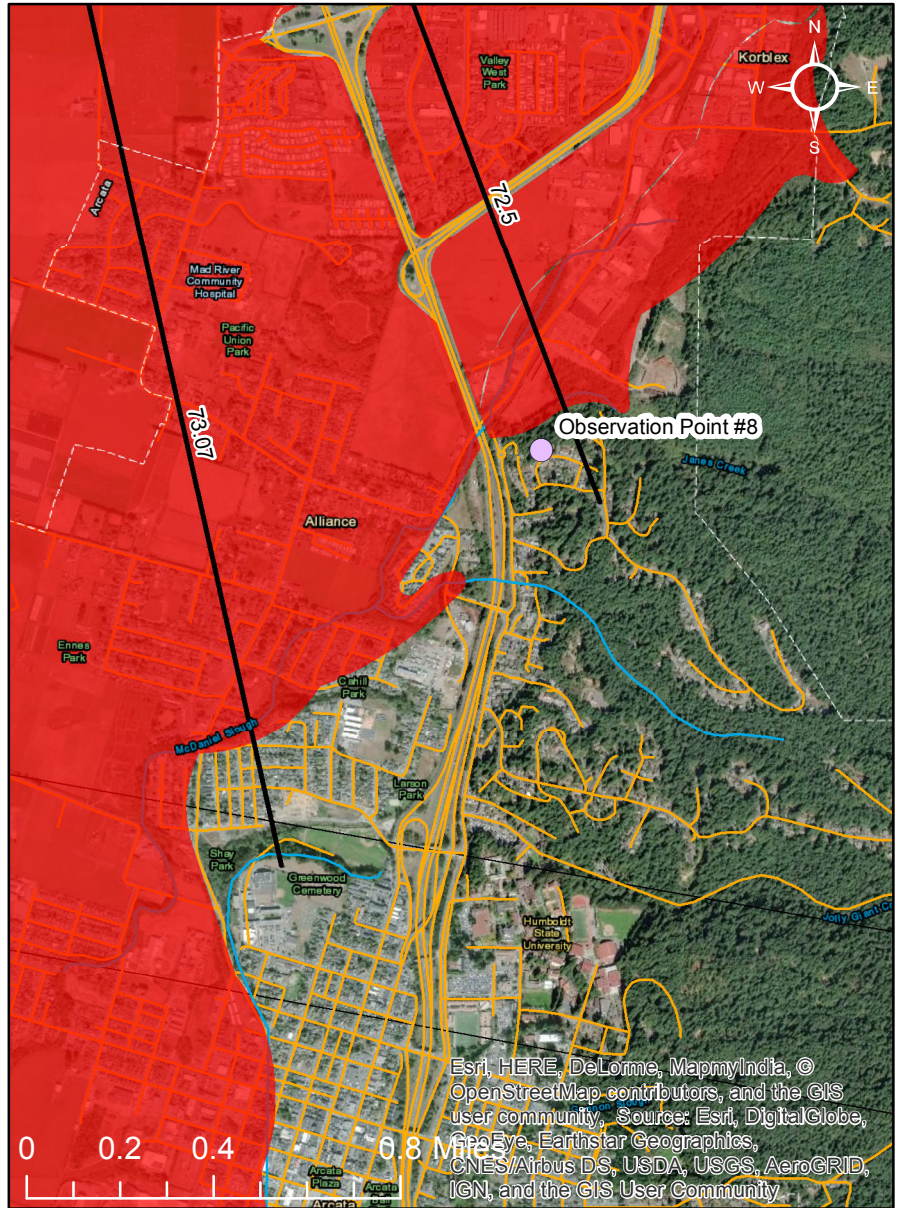
Corner of Curtis Rd.
and Forest Dr.



Observation Point #8



View of Mad River from
Observation Point #8



Esri, HERE, DeLorme, MapmyIndia, © OpenStreetMap contributors, and the GIS user community, Source: Esri, DigitalGlobe, GeoEye, Earthstar Geographics, CNES/Airbus DS, USDA, USGS, AeroGRID, IGN, and the GIS User Community

Directions from Hwy 101	
Take Sunset Ave/HSU exit/Exit 714 from Hwy 101	Go 0.3 mi (total 0.3 mi)
Go East on Sunset Ave	Go 0.2 mi (total 0.5 mi)
Turn left onto L K Wood Blvd Continue for 3 minutes	Go 0.9 mi (total 1.4 mi)
Turn right onto Redwood Ave	Go 0.1 mi (total 1.5 mi)
Turn left onto Curits Ave	Go 0.1 mi (total 1.6 mi)
Pull to the side at corner of Curtis Ave and Forest Dr	Go 0.1 mi (total 1.7 mi)

- Observation Points
- Inundation Model for Sunny Day & Critical Apurtenant Structure (CAS) Failure Scenarios
- Inundation Model for Record Flood Scenario
- Map Book Coverage
- Roads
- Streams
- Mile Marker (from Dam)

The inundation area shown on this map reflects extremely rare events. Publication of this map is not intended to reflect in any way upon the integrity of R. W. Matthews Dam. All values in the table and inundation areas shown on the map are approximate



R. W. Matthews Dam
Ruth Lake, CA

EAP
Update 2019