

MCMP, LLC

Medical Cannabis Manufacturing Facility

90 Glendale Drive, McKinleyville, CA

Operations Plan & Manual

Table of Contents

1) County’s Access to the Facility:.....	3
2) Staffing & Staff Screening Processes	3
3) Days and Hours of Operation	3
4) Location Map.....	4
5) Security Measures –.....	4
i) Lighting:.....	4
ii) Alarm:	4
iii) Access Control:	5
iv) The Safety of Staff:.....	5
v) Diversion:	5
vi) Transport:	5
6) Customer Screening, Registration, and Validation Process and Procedures.	5
7) Inventory control processes and procedures	6
8) Measures taken to minimize carbon footprint.	6
9) Description of chemicals stored or discharged:.....	7
10) Quality/consumer safety control processes, procedures, and documentation.....	8
a) Product Quality Control:.....	8
b) Packaging:	9
11) Health and Safety:	9
a) Training.....	9
b) Physical Plant Inspection:.....	10
c) Sanitary Conditions: The Facility will take all reasonable measures and precautions to ensure the following:.....	10
12) Disposal of Waste and Destroyed Product:	12
13) Medical Marijuana Concentrate Production.	13
14) Production of Solvent-Based Medical Marijuana Concentrate:.....	15
15) Water-Based Medical Marijuana Concentrate and Food-Based Medical Marijuana Concentrate.....	1918

MCMP, LLC

OPERATIONS MANUAL

1) County's Access to the Facility:

- a) All facility personnel will cooperate fully with all conditions in the Use Permit and Use Permit Application requiring that the County, its agents, and employees, be granted access to the facility to seek verification of the information contained within the conditional use permit, permit applications, the Operations Manual, and the Operating Standards at any time before or after the conditional use permit is issued.
- b) The Humboldt County Sherriff's Department will be authorized to have 24 hour access to the facility's security surveillance video.

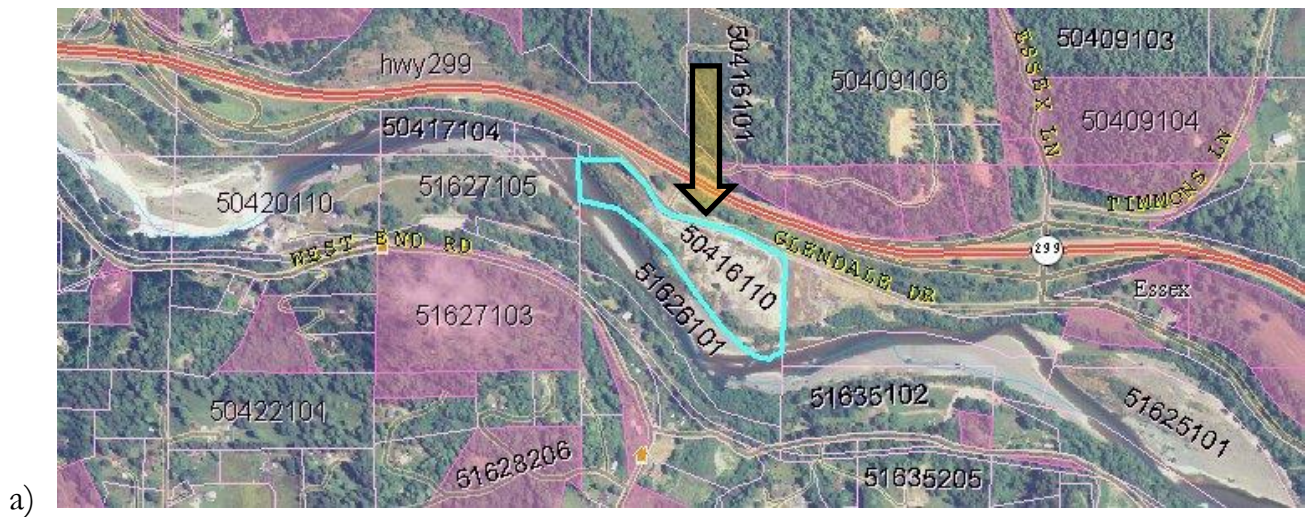
2) Staffing & Staff Screening Processes

- a) All candidates for staff positions will undergo criminal background checks as part of the standard screening process. To the maximum effect allowed by California and federal employment law, candidates with a criminal history or a history of drug abuse will be screened from employment.
- b) The facility will require 1 to 4 FTE employees depending on workload.

3) Days and Hours of Operation

- a) The facility is not open to the public and will not accept visitors without a specific business purpose.
- b) Hours of operation will typically be from 7 AM to 7 PM; however, during periods of seasonally high workload, the hours of operations within the facility may increase to 24 hours per day. During such extend hours of operations, shipping, receiving, and any other traffic or noise generating activities will be limited to normal working hours.

4) Location Map



5) Security Measures –

- a) The security measures located on the premises will include the following:
- i) Lighting:
 - (1) indoor and outdoor lighting will be controlled by photocell switching, timers, infrared motion sensors and/or other state-of-the-art control systems to maintain an adequate light level at the interior and exterior of the facilities to ensure that personnel and the video surveillance system can effectively monitor the space in and around the facility at all times. Exterior lighting will be directed so as to not pose a nuisance to neighboring properties.
 - ii) Alarm:
 - (1) A security/burglar alarm system will be installed and operated at all appropriate times within the facility. This system will be monitored by a third-party remote central control station which will have the responsibility for automatically providing notification to law enforcement of any breach in the facility's security system.

Communications between the facilities alarm system and the central control station will be uninterruptible by power outage and/or disability of the telephone system. Communications will be powered by an uninterruptible power supply, and transmission will either be by cellular or radio.

iii) Access Control:

- (1) All entrances to the occupied building space of the facility will be restricted by an access control system capable of identifying authorized personnel. The system will also be capable of limiting personnel access to the appropriate locations within the facility depending on the person's job and responsibilities, and also limit facility access to certain times and days as appropriate. 24 hour access to the facility by emergency responders (Fire Dept.) will be provided via a Knox Box.

iv) The Safety of Staff:

- (1) working in concert together, the access control system, lighting, and alarm system, will provide a secure and protected facility for the staff to occupy.

v) Diversion:

- (1) The security measures will secure the medical marijuana against diversion for non-medical purposes by protecting against theft not only from intruders, but also from staff members and visitors. This is done by limiting access both into and within different areas of the facility as necessary and by surveillance monitoring of personnel and visitors at all times when in close proximity to the product. Strict inventory control measures will also be engaged to prevent and detect diversion.

vi) Transport:

- (1) All medical marijuana deliveries will be received at the facility from a State licensed and/or locally permitted licensed transport company; and all Medical Marijuana-Infused Products will be transported to State licensed and/or locally permitted licensed Wholesale/Distribution companies by a State licensed and/or locally permitted licensed transport company.

6) Customer Screening, Registration, and Validation Process and Procedures.

- a) The facility is for the purpose of manufacturing and all products will be sold to State licensed facilities on a wholesale basis. As this is the case, the facility will not be open to the public and will not accept visitors without a specific pre-authorized business purpose. Only authorized representatives of state licensed wholesale customer facilities and appropriately licensed vendors will be allowed to enter the facility and be in close proximity to products and raw materials, but in all cases supervised at all times. Any other vendors or maintenance workers allowed in the facility will be at all times escorted and sequestered from the finished products and raw materials.

7) Inventory control processes and procedures

- a) The facilities inventory control process includes tracking of all incoming raw and processed materials, including the name and state license number of the cultivator, the testing lab data (as applicable), the strain, the supplier's product tracking identification data, and bill of lading from the transport company.
- b) All incoming raw materials will be assigned a batch number that can be cross-referenced to the above referenced data and stays with the product through the manufacturing process and to final sale to distributors and/or retailers.
- c) All outgoing product will be tracked by SKU, batch number, invoice, and shipping documents; unless the product is not for sale and will be destroyed. The process for documenting product to be destroyed is described separately in this manual.
- d) The methodologies for tracking and Inventory Control of Medical Marijuana and Medical Marijuana-Infused Product may be subject to requirements imposed by the State Licensing Authority and will be adjusted accordingly as required.

8) Measures taken to minimize carbon footprint.

- a) We believe that everyone has a responsibility to reduce their individual carbon footprint. We will do our part by doing the following activities and more . . .

- i) **Switch it Off:** Turn off the lights when natural light is sufficient and when we leave the room. It's that simple!
- ii) **Climate Control:** Keep our temperature system on a moderate setting while we're in the room.
- iii) **Wasteful Windows:** Use our windows wisely! If our climate control system is on, shut them...if we need a little fresh air, turn off the heat or AC.
- iv) **Minimize Plug Load:** Cut down the number of appliances we are running and we will save big on energy. For example, minimize the number of printers in our office.
- v) **Phantom Power:** Use power strips to easily unplug electronics when not in use.
- vi) **Give it a Rest:** Power our computers down when we're away. A computer turned off uses at least 65% less energy than a computer left on or idle on a screen saver.
- vii) **Switch to CFLs:** Compact fluorescent light bulbs (CFLs) use 75% less energy than incandescent and last up to 10 times longer.

9) Description of chemicals stored or discharged:

- a) The facility does not currently intend to handle any hazardous materials in amounts requiring a Hazardous Material Business Plan (HMBP); however, if the facility handles any non-exempt hazardous materials, it will register its hazardous materials with the local agency using the Hazardous Materials/Waste Registration Form so that the local agency can evaluate the storage or use and give notice of any permits or storage/use fees that may apply.
- b) If the facility begins to handle any individual hazardous material or mixture containing a hazardous material which has a quantity at any time during the reporting year equal to or greater than those listed below, it will complete a Hazardous Material Business Plan (HMBP) and submit a copy to the local agency (Humboldt County DHHS Division of Environmental Health) as well as the Humboldt Bay Municipal Water District:
 - i) 500 pounds for solid hazardous materials. [H&SC §25503.5(a)]
 - ii) The following amounts for liquid hazardous materials:

- (a) Lubricating oil as defined by H&SC §25503.5(b)(2)(B): 55 gallons of any type or 275 gallons aggregate quantity on site. H&SC §25503.5(b)(2)(A)]
 - (b) All others, including waste oil: 55 gallons. [H&SC §25503.5(a)]
 - iii) The following amounts of hazardous material gases:
 - (a) Oxygen, Nitrogen, or Nitrous Oxide stored/handled at a physician, dentist, podiatrist, veterinarian, or pharmacist's place of business: 1,000 cubic feet of each material on site. [H&SC §25503.5(b)(1)]
 - (b) All others: 200 cubic feet. [H&SC §25503.5(a)]
 - iv) Amounts of radioactive materials requiring an emergency plan under Parts 30, 40, or 70 of Title 10 Code of Federal Regulations or equal to or greater than applicable amounts specified in items 1, 2, or 3, above, whichever amount is smaller. [H&SC §25503.5(a)]
 - v) Applicable federal threshold planning quantities for extremely hazardous substances listed in 40 CFR Part 355, Appendix A.
- c) Disposal of any chemical, dangerous, or hazardous waste will be conducted in a manner consistent with federal, state and local laws, regulations, rules or other requirements. This may include, but is not limited to, the disposal of all solvents or other chemicals used in the production of Medical Marijuana Concentrate or any Medical Marijuana soaked in a Flammable Solvent for purposes of producing a Medical Marijuana Concentrate. Quantities of waste material will generally not exceed 55 gallons. Any waste solvents or other chemicals will be handled and disposed of properly by *Safety-Kleen* or another highly qualified and properly licensed contractor.

10) **Quality/consumer safety control processes, procedures, and documentation.**

- a) Product Quality Control:
 - i) In addition to meeting all State and local requirements for product quality control, the standard procedures for operation will include the following:
 - (1) Samples of all raw materials will be screened and tested by an independent State licensed and/or locally permitted licensed laboratory for pesticides, mold, and other undesirable qualities prior to incorporation into the manufacturing process.

- (2) Samples from each batch of finished products will be screened and tested by a State licensed and/or locally permitted licensed independent laboratory for pesticides, mold, and other undesirable qualities prior to release for sale to wholesalers and retailers.
- (3) Documentation of all lab test results will be kept on file.

b) Packaging:

- i) All packaging will meet State requirements for packaging. In advance of State requirements being issued, the facility will follow the following guidelines:
 - (1) Labeling will include a warning if nuts or other known allergens are used, and will include the total weight in grams of cannabis or milligrams of THC in the package.
 - (2) A warning that the item is a medication and not a food will be distinctly and clearly legible on the front of the package.
 - (3) The package label will have a warning that's clearly legible and emphasizes that the product is to be kept away from children.
 - (4) The label will also state that the product contains medical cannabis, and will specify the date of manufacture and batch number.
 - (5) Packaging that makes the product attractive to children will not be used.
 - (6) Any edible cannabis product that is made to resemble a typical food product (e.g., brownie, cake) will be in a properly labeled opaque (non see-through) package.

11) Health and Safety:

- a) Training.
 - i) Prior to engaging in the manufacture of any Edible Medical Marijuana-Infused Product, the Licensee will have an owner or employee who has successfully passed an approved and accredited food safety certification examination as specified in Sections 113947.2 and 113947.3 of the California Retail Food Code. Food safety certification will be achieved by successfully passing an examination from an accredited food protection manager certification organization. The certification organization will be accredited by the American National Standards Institute as meeting the

- requirements of the Conference for Food Protection's "Standards for Accreditation of Food Protection Manager Certification Programs.”
- ii) Employee Knowledge:
- (1) All food (Edible Medical Marijuana-Infused Product) employees will have adequate knowledge of, and will be properly trained in, food safety as it relates to their assigned duties.
 - (2) There will be at least one food safety certified owner or employee at the facility responsible for setting policy and providing training to employees. The certified owner or employee need not be present at the food facility during all hours of operation.
 - (3) The certified owner or employee will be responsible for ensuring that all employees who handle, or have responsibility for handling, non-prepackaged foods of any kind, have sufficient knowledge to ensure the safe preparation of the food. The nature and extent of the knowledge that each employee is required to have may be tailored, as appropriate, to the employee's duties related to food safety issues.

b) Physical Plant Inspection:

- i) The Facility will welcome inspection of the Medical Marijuana Center by the local fire department, building inspector, or code enforcement officer to confirm that no health or safety concerns are present. It is understood that the inspections may result in additional specific standards to meet local jurisdiction restrictions related to Medical Marijuana. An annual fire safety inspection may result in the required installation of fire suppression devices, or other means necessary for adequate fire safety. Any inspection reports created as a result of these inspections may be reviewed by the Humboldt Bay Municipal Water District within 48 hours' notice of any request.

c) Sanitary Conditions: The Facility will take all reasonable measures and precautions to ensure the following:

- i) That any person who, by medical examination or supervisory observation, is shown to have, or appears to have, an illness, open lesion, including boils, sores, or infected wounds, or any other abnormal source of microbial contamination for whom there is a reasonable possibility of contact with Medical Marijuana and Medical Marijuana-Infused Product will be excluded

- from any operations which may be expected to result in contamination until the condition is corrected;
- ii) Hand-washing facilities will be adequate and convenient and be furnished with running water at a suitable temperature. Hand-washing facilities will be located in the Facility and where good sanitary practices require employees to wash or sanitize their hands, and provide effective hand-cleaning and sanitizing preparations and sanitary towel service or suitable drying devices;
 - iii) That all persons working in direct contact with Medical Marijuana and Medical Marijuana-Infused Product will conform to hygienic practices while on duty, including but not limited to:
 - (1) Maintaining adequate personal cleanliness;
 - (2) Washing hands thoroughly in an adequate hand-washing area(s) before starting work and at any other time when the hands may have become soiled or contaminated; and
 - (3) Refraining from having direct contact with Medical Marijuana and Medical Marijuana Infused Product if the person has or may have an illness, open lesion, including boils, sores, or infected wounds, or any other abnormal source of microbial contamination, until such condition is corrected.
 - iv) That litter and waste are properly removed and the operating systems for waste disposal are maintained in an adequate manner so that they do not constitute a source of contamination in areas where Medical Marijuana and Medical Marijuana-Infused Product are exposed;
 - v) That floors, walls, and ceilings are constructed in such a manner that they may be adequately cleaned and each is kept clean and in good repair;
 - vi) That there is adequate lighting in all areas where Medical Marijuana and Medical Marijuana Infused Product are stored or sold, and where equipment or utensils are cleaned;
 - vii) That there is adequate screening or other protection against the entry of pests. Rubbish will be disposed of so as to minimize the development of odor and minimize the potential for the waste becoming an attractant, harborage, or breeding place for pests;
 - viii) That fixtures and other facilities are maintained in a sanitary condition;
 - ix) That toxic cleaning compounds, sanitizing agents, and other chemicals will be identified, held, stored and disposed of in a manner that protects against

- contamination of Medical Marijuana or Medical Marijuana-Infused Product and in a manner that is in accordance with any applicable local, state or federal law, rule, regulation or ordinance;
- x) That all operations in the receiving, inspecting, transporting, segregating, preparing, manufacturing, packaging, and storing of Medical Marijuana or Medical Marijuana-Infused Product will be conducted in accordance with adequate sanitation principles;
 - xi) That employees are provided with adequate and readily accessible toilet facilities that are maintained in a sanitary condition and good repair; and
 - xii) That Medical Marijuana and Medical Marijuana-Infused Product that can support the rapid growth of undesirable microorganisms are held in a manner that prevents the growth of these microorganisms.

12) Disposal of Waste and Destroyed Product:

- a) Medical Marijuana and Medical Marijuana-Infused Product waste will be made unusable and Unrecognizable prior to leaving the Facility. No cannabis, solvent, or other chemical wastes will be disposed of onsite.
 - i) Methods to make waste unusable and unrecognizable. Medical Marijuana and Medical Marijuana-Infused Product waste will be rendered unusable and unrecognizable through one of the following methods unless another method is prescribed by the County of Humboldt or the State of California:
 - (1) Grinding and incorporating the marijuana waste with non-consumable, solid wastes listed below such that the resulting mixture is at least 50 percent non-marijuana waste:
 - (a) Paper waste;
 - (b) Plastic waste;
 - (c) Cardboard waste;
 - (d) Food waste;
 - (e) Grease or other compostable oil waste;
 - (f) Bokashi, or other compost activators;
 - (g) Other wastes approved by the State Licensing Authority that will render the Medical Marijuana and Medical Marijuana-Infused Product waste unusable and Unrecognizable as marijuana; and
 - (h) Soil.

- ii) The methodology for destroying and disposing of Medical Marijuana and Medical Marijuana-Infused Product may be subject to requirements imposed by the State Licensing Authority and will be adjusted accordingly as required.
- b) Records of destroyed product:
 - i) Records of destroyed raw materials and product will be kept and cross-referenced by batch number and SKU. The weight or volume, as appropriate, will be recorded along with the method of disposal.
 - ii) The methodology for recording destroyed Medical Marijuana and Medical Marijuana-Infused Product may be subject to requirements imposed by the State Licensing Authority and will be adjusted accordingly as required.

13) Medical Marijuana Concentrate Production.

- a) The facility may produce Water-Based Medical Marijuana Concentrate and Food-Based Medical Marijuana Concentrate, and may also produce Solvent-Based Medical Marijuana Concentrate using only the following solvents: butane, propane, CO2, ethanol, and/or isopropanol, ~~acetone, and/or heptane.~~
- b) The Facility will, regardless of the method of extraction or category of concentrate being produced, do the following:
 - i) Ensure that the space in which any Medical Marijuana Concentrate is to be produced is a fully enclosed room and clearly designated on the current diagram of the Facility.
 - ii) Ensure that all applicable sanitary rules are followed.
 - iii) Ensure that the standard operating procedure for each method used to produce a Medical Marijuana Concentrate on its Licensed/Permitted Premise includes, but need not be limited to, step-by-step instructions on how to safely and appropriately:
 - (1) Extract cannabinoids and other essential components of Medical Marijuana;
 - (2) Purge any solvent or other unwanted components from a Medical Marijuana Concentrate,
 - (3) Clean all equipment, counters and surfaces thoroughly; and

- (4) Dispose of any waste produced during the processing of Medical Marijuana in accordance with all applicable local, state and federal laws, rules and regulations. See – “Disposal of Waste and Destroyed Product.”
- iv) Establish written and documentable quality control procedures designed to maximize safety for employees and minimize potential product contamination.
- v) Establish written emergency procedures to be followed by employees in case of a fire, chemical spill or other emergency.
- vi) Have a comprehensive training manual that provides step-by-step instructions for each method used to produce a Medical Marijuana Concentrate on its Facility. The training manual will include, but need not be limited to, the following topics:
 - (1) All standard operating procedures for each method of concentrate production used at that Facility;
 - (2) The Medical Marijuana-Infused Products Manufacturer’s quality control procedures;
 - (3) The emergency procedures for the licensed/permitted premises;
 - (4) The appropriate use of any necessary safety or sanitary equipment;
 - (5) The hazards presented by all solvents used within the Facility as described in the material safety data sheet for each solvent;
 - (6) Clear instructions on the safe use of all equipment involved in each process and in accordance with manufacturer’s instructions, where applicable; and
 - (7) Any additional periodic cleaning required to comply with all applicable sanitary rules.
- vii) Provide adequate training to every employee prior to that individual undertaking any step in the process of producing a Medical Marijuana Concentrate.
 - (1) Adequate training will include, but need not be limited to, providing a copy of the training manual and live, in-person instruction detailing at least all of the topics required to be included in the training manual.
 - (2) The individual providing training will sign and date a document attesting that all required aspects of training were conducted and that he or she is

confident that the trainee can safely produce a Medical Marijuana Concentrate.

- viii) Maintain clear and comprehensive records of the name and signature of every individual who engaged in any step related to the creation of a Production Batch of Medical Marijuana Concentrate and the step that individual performed.
- ix) Business Records Required.

14) Production of Solvent-Based Medical Marijuana Concentrate:

- a) Subsequent to obtaining Land-Use Entitlement (i.e. Use Permit) and prior to operation, the facility will have obtained a Certificate of Occupancy, permit final inspection, or other appropriate evidence acceptable to the County of Humboldt that the facility meets or exceeds California Title 24 Codes as applicable to the project. The following considerations will be incorporated into the building permit application submittal:
 - i) Flammable Solvent Determinations. If a Flammable Solvent is to be used in the processing of Medical Marijuana into a Medical Marijuana Concentrate, then a Licensed Architect, Certified Industrial Hygienist, or Professional Engineer, as appropriate will:
 - (a) Establish a maximum amount of Flammable Solvents and other flammable materials that should be stored within that Facility in accordance with applicable laws, rules and regulations. Quantities of butane, CO₂, ethanol, and isopropanol will not exceed 55 gallons per solvent. Quantities of propane will not exceed 250 gallons.
 - (b) Determine what type of electrical equipment, which may include but need not be limited to outlets, lights, junction boxes, will be installed within the room in which Medical Marijuana Concentrate are to be produced or Flammable Solvents are to be stored in accordance with applicable laws, rules and regulations.
 - (c) Determine whether a gas monitoring system will be installed within the room in which Medical Marijuana Concentrate are to be produced or Flammable Solvents are to be stored, and if required the system's specifications, in accordance with applicable laws, rules and regulations. The manufacturing facility shall comply will all applicable building code requirements.

- (d) Determine whether fire suppression system must be installed within the room in which Medical Marijuana Concentrate are to be produced or Flammable Solvents are to be stored, and if required the system's specifications, in accordance with applicable laws, rules and regulations. A final determination on a fire suppression system, including flow containment, will be made by the County fire and building officials.
- ii) CO2 Solvent Determination. If CO2 is used as solvent at the Facility, then the a Licensed Architect, Certified Industrial Hygienist, or Professional Engineer will determine whether a CO2 gas monitoring system must be installed within the room in which Medical Marijuana Concentrate are to be produced or CO2 is stored, and if required the system's specifications, in accordance with applicable laws, rules and regulations.
 - iii) Exhaust System Determination. A Licensed Architect, Certified Industrial Hygienist, or Professional Engineer will determine whether a fume vent hood or exhaust system will be installed within the room in which Medical Marijuana Concentrate are to be produced, and if required the system's specifications, in accordance with applicable laws, rules and regulations.
 - iv) Material Change. If a Material Change is made to the equipment or a concentrate production procedure, in addition to all other requirements, a report will be obtained from a Licensed Architect, Certified Industrial Hygienist, or Professional Engineer re-certifying its standard operating procedures and, if changed, its Facility and equipment as well.
 - v) Manufacturer's Instructions. The Licensed Architect, Certified Industrial Hygienist, or Professional Engineer will review and consider any information provided to the Medical Marijuana-Infused Products Manufacturer by the designer or manufacturer of any equipment used in the processing of Medical Marijuana into a Medical Marijuana Concentrate.
 - vi) Records Retention. The facility will maintain copies of all reports received from a Licensed Architect, Certified Industrial Hygienist, or Professional Engineer on its Facility. Such reports will be maintained on the Premises until the facility ceases production of Medical Marijuana Concentrate.
- b) The facility will ensure that all equipment, counters and surfaces used in the production of a Solvent-Based Medical Marijuana Concentrate will be food-

grade and will not react adversely with any of the solvents to be used in the Facility. Additionally, all counters and surface areas will be constructed in a manner that reduces the potential development of microbials, molds and fungi and can be easily cleaned.

- c) The facility will ensure that the room in which Solvent-Based Medical Marijuana Concentrate shall be produced will contain an emergency eye-wash station. The eyewash station will be drained to the onsite septic system.

- d) The facility will ensure that a professional grade, closed-loop extraction system capable of recovering the solvent is used to produce Solvent-Based Medical Marijuana Concentrate (unless using water, ethanol, or isopropanol methods);
 - i) UL or ETL Listing.
 - (1) If the system is UL or ETL listed, then a Medical Marijuana-Infused Products Manufacturer will use the system in accordance with the manufacturer's instructions.
 - ii) If the system is UL or ETL listed but the facility intends to use a solvent in the system that is not listed in the manufacturer's instructions for use in the system, then, prior to using the unlisted solvent within the system, the Medical Marijuana-Infused Products Manufacturer will obtain written approval for use of the non-listed solvent in the system from either the system's manufacturer or a Professional Engineer after the Professional Engineer has conducted a peer review of the system. In reviewing the system, the Professional Engineer shall review and consider any information provided by the system's designer or manufacturer. The manufacturer will provide written notification to the County Planning and Building Department and the Humboldt Bay Municipal Water District if any material change occurs.
 - iii) If the system is not UL or ETL listed, then there will be a designer of record. If the designer of record is not a Professional Engineer, then the system will be peer reviewed by a Professional Engineer. In reviewing the system, the Professional Engineer may review and consider any information provided by the system's designer or manufacturer. The manufacturer will provide written notification to the County Planning and Building

Department and the Humboldt Bay Municipal Water District if any material change occurs.

- e) Ethanol or Isopropanol. The Facility need not use a professional grade, closed-loop system extraction system capable of recovering the solvent for the production of a Solvent-Based Medical Marijuana Concentrate if ethanol or isopropanol are the only solvents being used in the production process.
- f) The facility will ensure that all solvents used in the extraction process are food-grade or at least 99% pure;
 - i) A material safety data sheet for each solvent used or stored on the Facility will be obtained and made readily available. Receipts of purchase for all solvents used or to be used in an extraction process will be maintained.
 - ii) Denatured alcohol will not be used to produce a Medical Marijuana Concentrate.
 - iii) All Flammable Solvents or other flammable materials, chemicals and waste will be stored in accordance with all applicable laws, rules and regulations. At no time will the facility store more Flammable Solvent on its Facility than the maximum amount established for the Facility by the a Licensed Architect, Certified Industrial Hygienist, or Professional Engineer. Quantities of butane, CO₂, ethanol, and isopropanol will not exceed 55 gallons per solvent. Quantities of propane will not exceed 250 gallons.
 - iv) The facility will ensure that the appropriate safety and sanitary equipment, including personal protective equipment, will be provided to, and appropriately used by, each employee engaged in the production of a Solvent-Based Medical Marijuana Concentrate; and a properly trained employee will be present at all times during the production of a Solvent-Based Medical Marijuana Concentrate whenever an extraction process requires the use of pressurized equipment.
 - v) Ethanol and Isopropanol: If the Facility only produces Solvent Based Medical Marijuana Concentrate using ethanol or isopropanol at its Facility and no other solvent, then it shall be relieved from the criteria above in this section titled “Production of Solvent-Based Medical Marijuana Concentrate.” Instead the facility will follow the criteria for water based

(non-solvent) extraction. Regardless of which rule is followed, the ethanol or isopropanol will be food grade or at least 99% pure and denatured alcohol will not be used.

15) Water-Based Medical Marijuana Concentrate and Food-Based Medical Marijuana Concentrate.

- a) When engaging in the production of a Water-Based Medical Marijuana Concentrate or a Food-Based Medical Marijuana Concentrate the facility will:
 - i) The facility will ensure that all equipment, counters and surfaces used in the production of a Concentrate is food-grade including ensuring that all counters and surface areas were constructed in such a manner that it reduces the potential for the development of microbials, molds and fungi and can be easily cleaned.
 - ii) The facility will ensure that all equipment, counters, and surfaces used in the production of a Concentrate are thoroughly cleaned after the completion of each Production Batch.
 - iii) The facility will ensure that any room in which dry ice is stored or used in the processing Medical Marijuana into a Medical Marijuana Concentrate is well ventilated to prevent against the accumulation of dangerous levels of CO₂.
 - iv) The facility will ensure that the appropriate safety or sanitary equipment, including personal protective equipment, is provided to, and appropriately used by each employee engaged in the production of a Concentrate.
 - v) The facility will ensure that only finished drinking water and ice made from finished drinking water is used in the production of a Water-Based Medical Marijuana Concentrate.
 - vi) The facility will ensure that if propylene glycol or glycerin is used in the production of a Food-Based Medical Marijuana Concentrate, then the propylene glycol or glycerin to be used is food-grade.
 - vii) The facility will ensure it follows all of the process criteria related to the production of a Solvent-Based Medical Marijuana Concentrate if a pressurized system is used in the production of a Water-Based Medical Marijuana Concentrate or a Food-Based Medical Marijuana Concentrate.